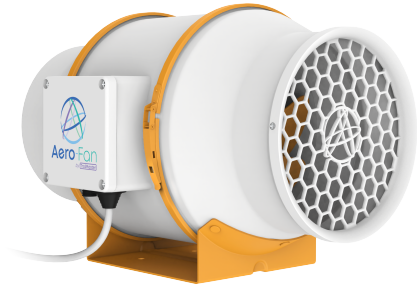


V-6

6 Inch Inline Duct Ventilation Fan

The 6-inch Inline Duct Ventilation Fan is a compact and efficient device designed to improve air circulation and ventilation in indoor spaces. With its powerful motor, it moves a significant volume of air, removing stale air, and humidity. Its versatile design allows easy installation in various duct systems, ensuring a fresh and comfortable environment. Ideal for the grow room settings, this fan is a reliable solution for maintaining optimal indoor air quality.



Specification

V-6

Operating Voltage

Operating Voltage100-277V~, 50/60Hz

Rated Current

Rated Current1.0A Max.

Rated Input Power

Rated Input Power66W Max.

No. of Blades

No. of Blades8

Rotating Direction

Rotating DirectionCCW

Max. Air Flow

Max. Air Flow611.6m³/h / 360cfm

Max. Static Air Pressure

Max. Static Air Pressure459Pa

Connection Diameter

Connection DiameterΦ150mm / 5.91inch

Acoustic Sound Level

Test at the fan center, 3 meters away37dB±5dB

Package Content

6 Inch Inline Duct Ventilation Fan (V-6)	1pc
ECS-7 Cable Set	1pc
ECS-9 Cable Set	1pc

Package Dimensions

Size	12.99inch / 330mm(L) x 9.25inch / 235mm(W) x 9.25inch / 235mm(H)
Gross Weight	6.83lbs / 3.10kg

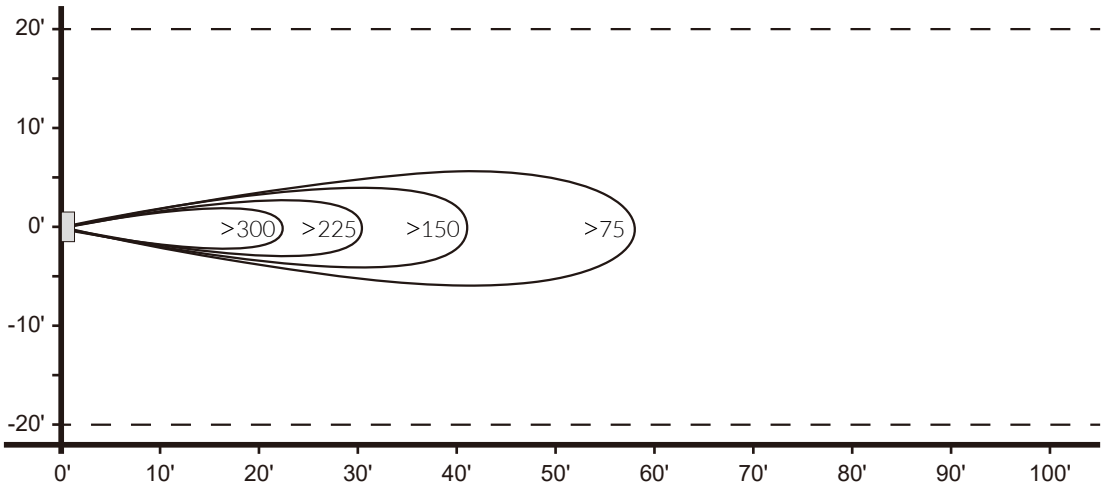
Operating Temperature

Operating Temperature-4~140°F

Link Up

V-6

AIR FLOW PATTERN (FULL SPEED)



Above velocities shown in feet / minute.

